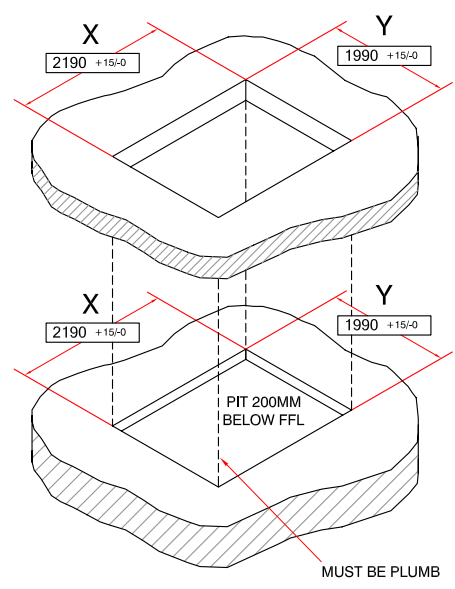
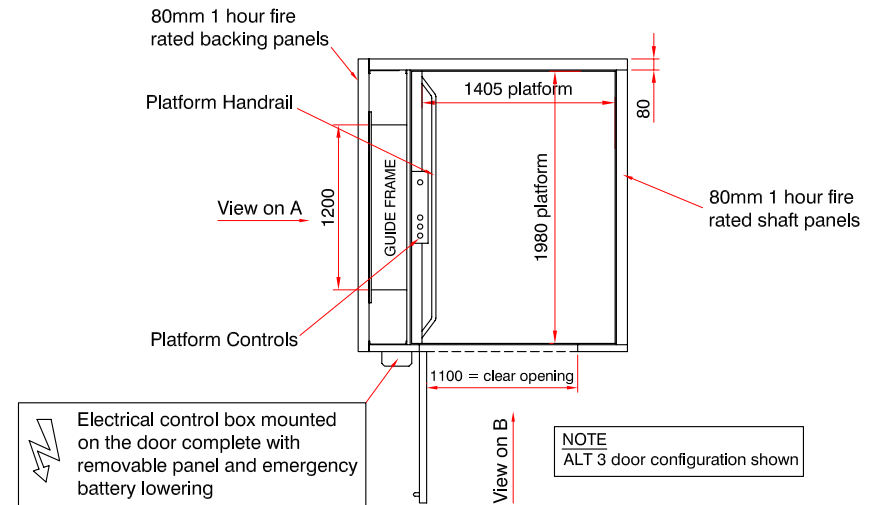
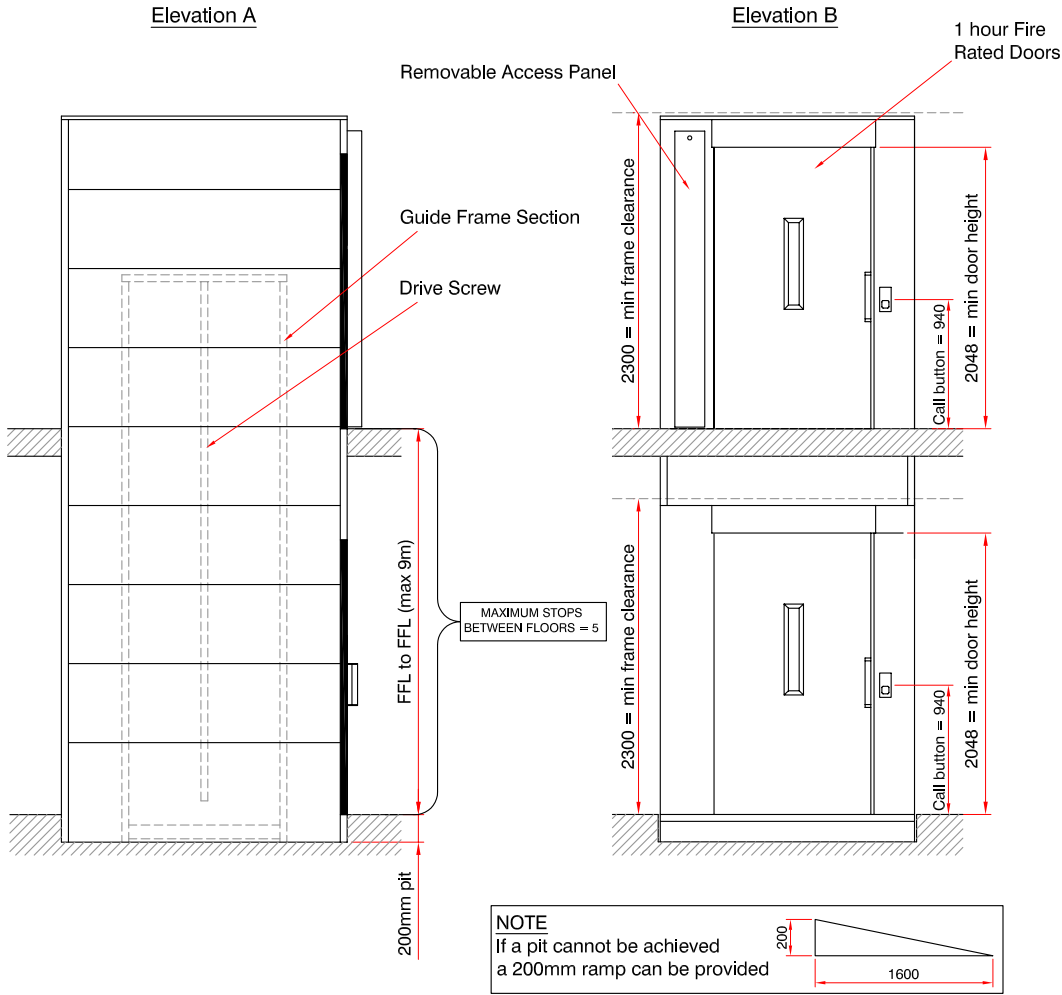


**NOTE - THIS DRAWING IS FOR GUIDANCE ONLY AND MUST NOT BE USED AS A PROPER WORKING DRAWING. FOR ENQUIRIES ABOUT THE LIFT PLEASE CONTACT THE Platform Lift Co - TEL 01256 896000
PLEASE NOTE THAT APERTURE SIZES DO VARY, SITE SPECIFIC DRAWINGS ARE AVAILABLE UPON RECEIPT OF ORDER**



Vertical Lift Platform Specification

Load: 1000kg / 8 persons

Drive: Direct driven screw and nut

Speed: 0.15m / sec

Travel: Maximum travel up to 9m

Stops: Max 5 stops

Motor: 2.2kw

Power: 415v 3ph 50Hz 10A

Colour: RAL 9010 as standard (alternative RAL colours available)

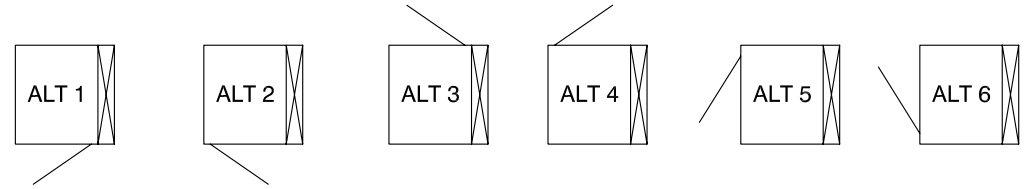
Panels: 80mm thick double skin panels

Panel Infill: Rockwool Infill

Fire rating: 1hr (60min)

Builders work Required

- 1 - Provide a trimmed pit / shaft aperture to the dimensions shown, pit must be smooth level and structurally sound
- 2 - Provide a power supply complete with a lockable isolator
- 3 - Provide secure thresholds for door fixing



Door Configurations Available
(Guides can go on any side)

Platform Lift Company
Apsley Barns, Apsley, Near Andover, Hants, SP11 6NA
Tel - 01256 896000
Fax - 01256 896900
E-mail - info@platformliftco.co.uk
website - www.platformliftco.co.uk

TITLE 'A' Type Vertical Platform Lift - 1000kg		REV A
DWG NO. 1000 - FULLY FIRE RATED		SCALE NTS
DATE 28/09/06	DRAWN RH	